

# ZX-G1

## USER MANUAL



**ZERO-X**



# CONTENTS

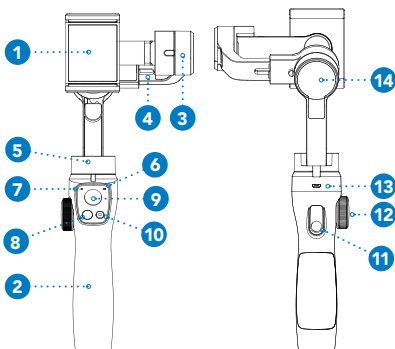
<b>1.0</b>	<b>ABOUT THE ZX-G1.....</b>	<b>5</b>
<b>2.0</b>	<b>COMPONENTS.....</b>	<b>5</b>
<b>3.0</b>	<b>GETTING STARTED .....</b>	<b>6</b>
<b>4.0</b>	<b>HOW TO CHARGE YOUR ZX-G1 .....</b>	<b>7</b>
4.1	TO START.....	7
4.2	HOW TO USE AND CALIBRATE THE ZX-G1 .....	8
<b>5.0</b>	<b>ZX-G1 CONTROLS AND FUNCTIONS .....</b>	<b>8</b>
5.1	POWER / MODE BUTTON.....	8
5.2	CAMERA SHUTTER BUTTON..	9
5.3	BATTERY LEVEL INDICATOR..	9
5.4	MODE INDICATOR.....	10
5.5	JOYSTICK.....	11
5.6	ZOOMING WHEEL .....	11
5.7	TRIGGER BUTTON .....	11
<b>6.0</b>	<b>FUNCTIONS .....</b>	<b>12</b>
6.1	ORIENTATIONS.....	12
6.2	VERTICAL SHOOTING MODE .....	12
6.3	INCEPTION MODE.....	13
6.4	UNDERSLUNG .....	13
6.5	OPERATION ERRORS.....	14

6.6	CONTROLLING THE CAMERA .....	14
7.0	INSTALLING AND USING THE ZERO-X GIMBAL APP.....	14
8.0	MANUAL STEPS FOR CONNECTING TO THE ZERO-X GIMBAL APP.....	15
9.0	ZERO-X GIMBAL APP MAIN USER SCREEN .....	16
10.0	UPGRADE YOUR FIRMWARE .....	20
11.0	SPECIFICATIONS.....	21
12.0	WARRANTY.....	22
13.0	NOTES.....	28

## 1.0 ABOUT THE ZX-G1

The ZX-G1 has been designed to turn your smartphone into a stable, smooth and lightweight 3 axis-camera. High precision motors make this gimbal exceptionally stable.

## 2.0 COMPONENTS



1. Mobile Phone Holder

2. Handle

3. Pitch Motor

4. Adjustable Arm

5. Pan Motor

6. Mode Indicator

7. Battery Indicator

8. Power/Mode Button

9. Joystick

10. Shooting Button

11. Trigger Button

12. Zooming Wheel

13. Micro USB

14. Roll Motor

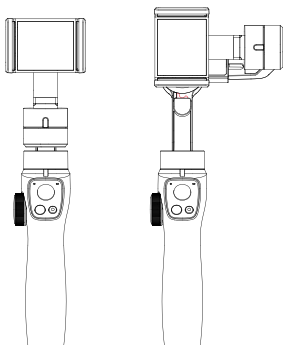
### 3.0 GETTING STARTED

Make sure your smartphone and ZX-G1 are fully charged and you have the App installed and running (see QR code on page 14). You might need to manually connect to Bluetooth.

**CAUTION:** Please ensure your smartphone is attached to the ZX-G1 before you turn the gimbal on.

#### UNFOLD THE ZX-G1

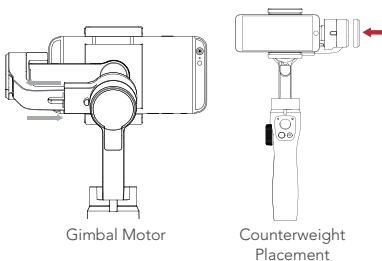
To operate the ZX-G1, you will need to unclip the arm. To do this, hold the handle with one hand as shown. Rotate the gimbal arm by 180 degrees (again, as shown in the diagram). It is normal for the arm to be stiff during first use. When you hear a click, this means the gimbal is steady.



**NOTE:** Please ensure to extend arm.

If your smartphone is unbalanced, you can use the counterweight to balance it.

If required, place the counterweight onto the gimbal motor (as shown in the diagram below). Always make sure that the gimbal motor is on your right side.



**NOTE:** Make sure the ZX-G1 stabiliser is off when you fold or unfold it (the stabiliser main unit with buttons).

## 4.0 HOW TO CHARGE YOUR ZX-G1



- Charging time: 3 hours (approx, with 5V 2A power adaptor).
- Operating time: 12 hours (approx).
- Charging port (Micro USB).

### 4.1 TO START

1. To use the ZX-G1 gimbal you will need to secure your smartphone to clamp and turn it on.

**NOTE:** The clamp needs to be 5mm from the centre of the smartphone to achieve balance. The lens of the smartphone camera should always be to the left of the clamp.



3. To turn on, press and hold the power button for three seconds.

Your smartphone needs to be balanced for the ZX-G1 gimbal to maneuver it.

## 4.2 HOW TO USE AND CALIBRATE THE ZX-G1

If the gimbal starts to drift slowly, press this icon to calibrate the sensors.

## 5.0 ZX-G1 CONTROLS AND FUNCTIONS

### 5.1 POWER / MODE BUTTON



- When power is OFF, tap the ON/OFF button once to view battery level.
- When power is ON, tap the ON/OFF once to switch the smartphone camera between portrait and landscape.
- Press the OFF button for three seconds to completely turn off ZX-G1.



## 5.2 CAMERA SHUTTER BUTTON



Depending on what mode it is in (i.e. photo or video) a single tap will take a photo or start / stop recording.

- **Double tap:** Switch between the front or rear camera (when using the App).
- **Press and hold:** Switch between photo / video mode.

## 5.3 BATTERY LEVEL INDICATOR:



Battery health will be shown by the left LED light. Green is healthy, red indicates the ZX-G1 needs charging.

## 5.4 MODE INDICATOR

The ZX-G1's function is indicated by flickering lights, as set out below.

"M" Indicator Status	Gimbal Mode	Triggered By	Description
Solid green light	Follow	Default	Your smartphone camera will follow the pitch and yaw of the ZX-G1 smoothly. During this mode, the roll is locked.
Flashing green light	Phone GO	Press and hold the trigger button	Best for filming sporting events, the ZX-G1 gimbal will move your smartphone quickly to record.
Solid blue light	FPV	Double tap the power button	This mode is best for first-person-view. Your smartphone will follow the pitch and yaw of the gimbal.
Flashing blue light	Inception	Triple tap the power button	Used to film a 360° view. This function works when locked in roll, pitch and yaw movement of the gimbal. The joystick can be used to control the pitch and roll of the gimbal.
Solid red light	Lock	Press and hold the trigger button	In this mode, the camera does not follow the movement of the gimbal. However, the joystick can be used to control the pitch and yaw of the gimbal. This mode is used when shooting linear movements.
Flashing red light	Gimbal Motor Protection	Malfunction button	When flickering, this is a clear sign that the ZX-G1 is malfunctioning. Turn off the gimbal and reset. If light is still flicking consult your manual.

## 5.5 JOYSTICK

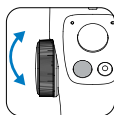


Move up and down to control the gimbal pitch.

Move left and right to control the gimbal yaw.

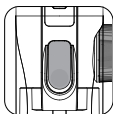
**BEGINNERS TIP:** The three axes of rotation in the ZX-G1, as controlled by the joystick are referred to as pitch, roll and yaw. When the joystick is used, the default movement of your smartphone will appear opposite to what is intended. However, the gimbal is moving your smartphone to orientate the camera to the intended position. This can be changed through gimbal settings in the App.

## 5.6 ZOOMING WHEEL



Move the wheel clockwise to zoom in and anti-clockwise to zoom out. Specific functions can also be defined and functions set in the App (i.e: pan the mobile phone via the wheel).

## 5.7 TRIGGER BUTTON



This button can be used to do the following:

- Press down and hold for several seconds to switch into lock mode.
- Release it to return to the previous mode.

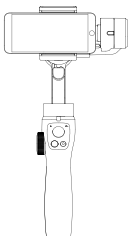
- To reset, double click quickly.
- Click once then, quickly hold it “M” light flashes green, this is “Phone Go” mode. (quickly press once, then press again and hold).

## 6.0 FUNCTIONS

The ZX-G1 has several photography functions you can use to take great photos or film videos. To use these functions, please open to the App. These functions are described on page 16.

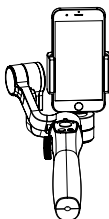
### 6.1 ORIENTATIONS

The ZX-G1 can be used in a standard, upright position.



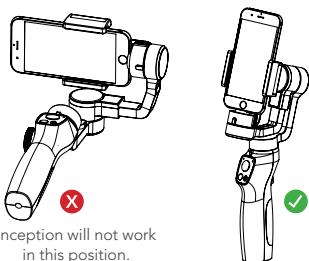
### 6.2 VERTICAL SHOOTING MODE

To shoot vertically, click the power button twice quickly. Double click the power button again to exit this mode.



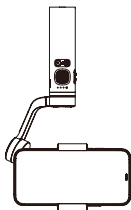
## 6.3 INCEPTION MODE

Inception mode allows you to take great spinning 360° shots. To use this mode, tap the power button (quickly) three times and then use the joystick to rotate the phone 360°.



## 6.4 UNDERSLUNG

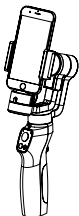
If you hold the ZX-G1 upside down, it will transition to 'underslung' mode and will record footage close to the ground.



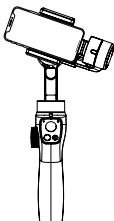
## 6.5 OPERATION ERRORS

If light flashes red, check the following Operations:

1. The arm won't unlock, as per the picture.



2. The balance of gimbal arm hasn't been adjusted.



Please extend the arm and adjust the phone re-balance and then reset the gimbal.

## 6.6 CONTROLLING THE CAMERA

The ZX-G1 can be connected to your phone via Bluetooth. The Zero-X Gimbal App also allows for the ZX-G1 gimbal to be operated wirelessly.

## 7.0 INSTALLING AND USING THE ZERO-X GIMBAL APP

Please scan the below QR code.

OR

Please search the App Store for '**Zero-X Gimbal**'.



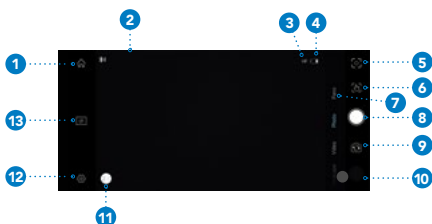
The Zero-X Gimbal App requires iOS 11.0 and above on iPhone or Android device to run.

## 8.0 MANUAL STEPS FOR CONNECTING TO THE ZERO-X GIMBAL APP

1. Turn on your phone and scan the QR code or search the App store for Zero-X Gimbal.
2. Turn Bluetooth on the phone and run Zero-X Gimbal App. Connect to the device called ZX-G1.
4. After connecting successfully, you can now use and control the smartphone camera and gimbal from the App.



## 9.0 ZERO-X GIMBAL APP MAIN USER SCREEN



### 1. Home

Press to go back to the home page.

### 2. Bluetooth Connection Status

Indicates the current operation mode of the ZX-G1.

If it drops out there will be a cross through this icon, and you will need to reconnect to Bluetooth to operate the ZX-G1.

### 3. Gimbal Operating Mode

Indicates the current operating mode of the ZX-G1.

### 4. Gimbal Battery Level

As shown by battery icon on App screen.

### 5. Smart Tracking Indicator

This has two modes- face tracking and object tracking.

#### Face / Object Tracking Mode:

The Zero-X Gimbal App will recognise the closest face or object and calibrate the ZX-G1 gimbal to follow it.



**BEGINNERS TIP:** A green, rectangle frame will appear on your phone screen/ Zero-X Gimbal App, once a face or object has been identified. If the object or face is not recognised the rectangle will become red, and you will need to start the tracking recognition process again.

If the user wants to stop tracking, press the cross icon on the top right-hand corner of the rectangle.

## 6. Gesture Control Mode

This mode allows you to make certain hand gestures that will help control functions of the camera.

Recognised gestures:

- **Scissor Gesture:** 3 second delay before photo is taken.
- **Palm Gesture:** The camera will switch between photo and video mode.

## 7. Shooting Modes/ Functions

Slide to select different shooting modes:

- **Panorama:** There are three sub-modes: 180°, 320° and 3x3 modes. In 180° mode 3 photos are taken and fused together. In 320° mode, 8 photos are taken and fused together. In 3x3 mode, 9 photos are taken and fused together.
- **Photo:** Takes a single photo or is used as a timer.
- **Video:** Shoots a video.
- **Beauty Mode:** Allows for softer lights

and filters.

- **Slow-Motion:** Shoots 8 times slower than usual.
- **Timelapse:** There are 2 sub-modes – static timelapse and waypoint lapse.

When in static Timelapse Mode, select the interval and time length on the top of the screen and press the record icon. In this mode, you can also use the tracking feature, while shooting timelapse videos simultaneously.

When in Timelapse Mode, besides the interval and time length, the user can also set up to 5 waypoints by using the joystick.

The ZX-G1 will move to the pre-selected waypoints in sequence after shooting starts.

In hyperlapse mode, only motion will be recorded by the ZX-G1.

## 8. Shutter

Button which will take photos or begin recording.

## 9. Album

Access your footage and photos.

## 10. Switch between front and rear camera

Easily transition between both viewpoints.

## 11. Switch between Zoom or Focus Mode

'Z' stands for 'zoom'. In this mode, the slider on the gimbal controls the zoom of the image. 'F' stands for 'focus'.

In this mode, the slider on the ZX-G1 controls the focus of the image.

## 12. Settings

**Camera settings:** In this setting you can set flashlights, grids and image aspect ratios.

- **Joystick sensitivity:** You can adjust the sensitivity of the joystick. The user can also reverse the up/ down and left/ right control of the joystick.

## 13. Parameters of the ZX-G1 App

- **The image resolution for panorama:** There are 3 grades: low, medium and high. If necessary, try reducing the image resolution setting in your smartphone to improve the quality of your panorama shot.
- **Calibrating sensors:** If the gimbal starts to drift slowly, press this icon to calibrate the sensors. Reboot the ZX-G1 after the calibration.
- **Horizontal adjustment:** Calibrate the horizon of the ZX-G1.
- **Live Face tracking:** Enable live face tracking while using other streaming apps.
- **Firmware upgrade:** Press to upgrade the firmware of the ZX-G1. When there is a blue dot on this icon an upgrade to the latest firmware version is required.

## 10.0 UPGRADE YOUR FIRMWARE

Check the battery level has capacity for the upgrade- it should show 2 lights or more.

Connect to Bluetooth, select 'Firmware upgrade' from the menu at the left side of the app interface to start.

Please keep note of the progress bar during upgrade.

Do not quit the app or minimise until upgrade is complete.

The ZX-G1 will turn off once upgrade has finished.

The user needs to turn on the ZX-G1 manually. If the upgrade fails, the user needs to reboot the ZX-G1 and reopen the Zero-X Gimbal App and try again.

## 11.0 SPECIFICATIONS

Specification	Gimbal
Model	ZX-G1
Dimension	295 x 113 x 72mm
Weight	490g
Applicable model phone width	67 - 92mm
Applicable model phone thickness	6.9 - 11mm
Maximum Payload	300g
Input Charging Voltage	5V
Operation Time	12 Hours
Charging Time	3 Hours

## 12.0 WARRANTY

### WARRANTY TERMS & CONDITIONS

Our goods come with guarantees that cannot be excluded under the Australian Consumer Law. You are entitled to a replacement or refund for a major failure and for compensation for any other reasonably foreseeable loss or damage. You are also entitled to have the goods repaired or replaced if the goods fail to be of acceptable quality and the failure does not amount to a major failure.

This warranty is provided in addition to your rights under the Australian Consumer Law. Directed Electronics Australia Pty Ltd (Directed Electronics) warrants that this product is free from defects in material and workmanship for a period of 12 months from the date of purchase or for the period stated on the packaging. This warranty is only valid where you have used the product in accordance with any recommendations or instructions provided by Directed Electronics.

This warranty excludes defects resulting from alterations of the product, accident, misuse, abuse or neglect. In order to claim the warranty, you must return the product to the retailer from which it was purchased or if that retailer is part of a National network, a store within that chain, along with satisfactory proof of purchase. The retailer will then return the goods to Directed Electronics.

Directed Electronics will repair, replace or refurbish the product at its discretion. The retailer will contact you when the product is ready for collection. All costs involved in claiming this warranty, including the cost of the retailer sending the product to Directed Electronics, will be borne by you.

Email: [admin@zero-x.com.au](mailto:admin@zero-x.com.au)

## **INDEMNITY**

You agree to defend, indemnify and hold harmless Zero-X and its subsidiaries and affiliates from and against any and all claims, proceedings, injuries, liabilities, losses, costs and expenses (including reasonable legal fees), including but not limited to, claims alleging negligence, invasion of privacy, copyright infringement and/or trademark infringement against Zero-X and its subsidiaries and affiliates, relating to or arising out of your breach of any provision of these terms, your misuse of Zero-X or its services, or your unauthorized modification or alteration of products or software.

## **WARRANTY AND WARRANTY DISCLAIMER**

Zero-X has a limited warranty, whereby Zero-X warrants to you and only to you that this Zero-X gimbal will be free from defects in materials and workmanship for one (1) year from the date of your purchase (unless a longer warranty period is required by law). The specifics of this Zero-X limited warranty are covered in this manual.

To the extent possible under governing law, other than the above product warranty for the Zero-X Gimbal you understand and agree that the Zero-X services are provided on an “as is” and “as available” basis.

Zero-X makes no warranty that the Zero-X product and services will meet your requirements or that use of the Zero-X services will be uninterrupted, timely, secure or error-free. Nor does Zero-X make any warranty as to the accuracy or reliability of any information obtained through the Zero-X (including third party content), that any defects in the Zero-X will be corrected or that the Zero-X products or Zero-X services will be compatible with any other specific hardware or service. Further, Zero-X does not warrant that the Zero-X or the Zero-X servers that provide you with data and content are free of viruses or other harmful components.

Zero-X also assumes no responsibility for and shall not be liable, for any damages caused by viruses that may infect your Zero-X.

In the event of any loss, damage or injury, you will not look to Zero-X to compensate you or anyone else. You release and waive for yourself and your insurer all subrogation and other rights to recover against Zero-X arising as a result of the payment of any claim for loss, damage or injury.

Zero-X equipment and services do not cause and cannot eliminate occurrences of certain events, including, and Zero-X makes no guarantee or warranty,



including any implied warranty of merchantability or fitness for a particular purpose, that the Zero-X equipment and services provided will detect or avert such incidents or their consequences.

Zero-X does not undertake any risk that you or property, or the person or property of others, may be subject to injury or loss if such an event occurs. The allocation of such risk remains with you, not Zero-X.

Other than the above product warranty for the Zero-X, its suppliers disclaim all warranties of any kind, whether express, implied, or statutory, regarding the Zero-X services, including any implied warranty of title, merchantability, fitness for a particular purpose, or noninfringement of third party rights.

Because some jurisdictions do not permit the exclusion of implied warranties, the last sentence of this section may not apply to you. Zero-X hereby further expressly disclaims all liability for any claims for service failures that are due to normal product wear, product misuse, abuse, product modification, improper product selection or your non-compliance with all applicable federal, state or local laws.

This warranty and warranty disclaimer give you specific legal rights, and you may have other rights that vary by state, province, or country. Other than as permitted by law, Zero-X does not exclude, limit or suspend other rights you have, including those that may arise from the nonconformity of a sales contract.

For a full understanding of your rights, you should consult the laws of your state, province, or country. For our Australian customers: Please note that this warranty is in addition to any statutory rights in Australia in relation to your goods which, pursuant to the Australian Consumer Law, cannot be excluded.

## **LIMITATIONS OF ZERO-X LIABILITY**

Under no circumstances will Zero-X be liable in any way for any content, including, but not limited to, the loss of content, any errors or omissions in any content, or any loss or damage of any kind incurred in connection with use of or exposure to any content posted, emailed, accessed, transmitted, or otherwise made available via Zero-X.

Zero-X liability for damages, especially for breach of duty or obligation, delay in performance, non-performance, or malperformance shall be precluded, except when these are due to negligent breaches of any significant contractual duty or obligation on the part of Zero-X. Any liability for negligence is limited to direct losses usually and typically foreseeable in such case. Should the claim for damages be based on wilful or grossly negligent breach of contractual duty or obligation on the part of Zero-X, the preclusion and limitation of liability mentioned in the preceding sentences will not apply. The preceding preclusion and limitation of liability will also not apply to claims for damages arising out of loss of life, bodily injury or health impacts for which Zero-X may be liable, or for non-contractual liability.

Some states and countries do not allow the exclusion or limitation of incidental or consequential damages, so the above limitation or exclusion may not apply to you. Additionally, this provision is not intended to limit Zero-X's liability in the event of Zero-X's wilful or intentional misconduct.

[illegible]

[illegible]

---

---

---

---

---

---

---

---

---

---

---

---

---

---

---



Capture the action.™

**ZERO-X**

ANOTHER  
DIRECTED  
BRAND



ROHS



[www.zero-x.com.au](http://www.zero-x.com.au)  
[www.zero-x.co.nz](http://www.zero-x.co.nz)

All Images, Information and Content are  
Copyright © 2021 Directed Electronics  
Australia Pty Ltd. All Rights Reserved.